

# Protocol Sheet

## Applied Biosystems® 7500 (Fast block) real-time PCR run setup instructions for Microbial DNA qPCR Arrays

### Important points before starting

- Please read the handbook supplied with the Microbial DNA qPCR Array, paying careful attention to the “Safety Information” and “Important Notes” sections, before beginning this procedure.
- Ensure the real-time PCR instrument is working properly. Refer to the manufacturer’s installation and maintenance manual if required.

### Procedure

#### PCR protocol template set up

1. Open the ABI 7500 v2.0.4 software on the desktop of the computer that is connected to the ABI 7500 instrument. Select “File”/“New Experiment”/“Advanced Setup”.
2. Under “Setup”, select the “Experimental Properties” menu (Figure 1).
3. Select “7500 (96 Wells)”, “Quantitation – Standard Curve”, “TaqMan® Reagents”, and “Standard (~ 2 hours to complete a run)”.

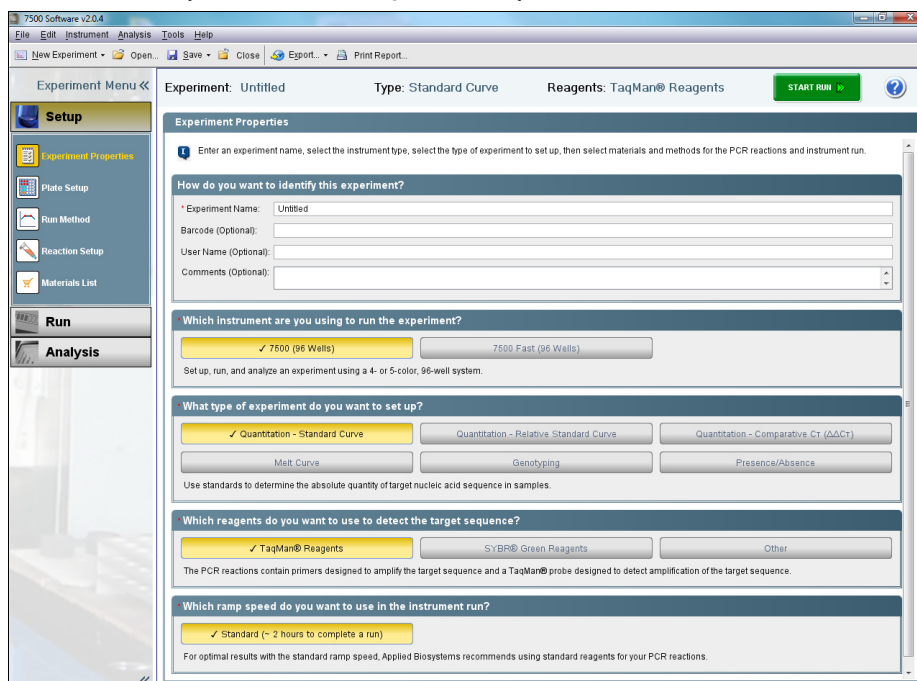


Figure 1. Experimental properties.



4. Under "Setup", select "Plate Setup" menu. In "Define Targets and Samples" tab, ensure that "FAM" is listed beside "Target 1". For "Quencher", select "none".
5. In the "Assign Targets and Samples" tab, highlight the entire plate in the "View Plate Layout" window. Check the "Assign" box next to "Target 1" under "Assign targets to the selected wells" and verify that all wells in "Plate Layout" view display the "U" symbol ("U" = unknown).
6. Under "Setup", select "Run Method" menu (Figure 2). Enter "25  $\mu$ L" for "Reaction Volume Per Well". Adjust parameters as follows:  
 Holding Stage:  
 Temperature: 95°C  
 Time: 10:00  
 Cycling Stage (2 Steps):  
 Number of Cycles: 40  
 Step 1: 95°C, 00:15  
 Step 2: 60°C, 02:00
7. Detect and record FAM™ fluorescence from every well during the annealing step of each cycle.
8. Select "File", then "Save As Template". Save the file as "Experimental Template files" (\*.edt) with the filename "MicrobialDNAqPCR\_Template" and click "Save".

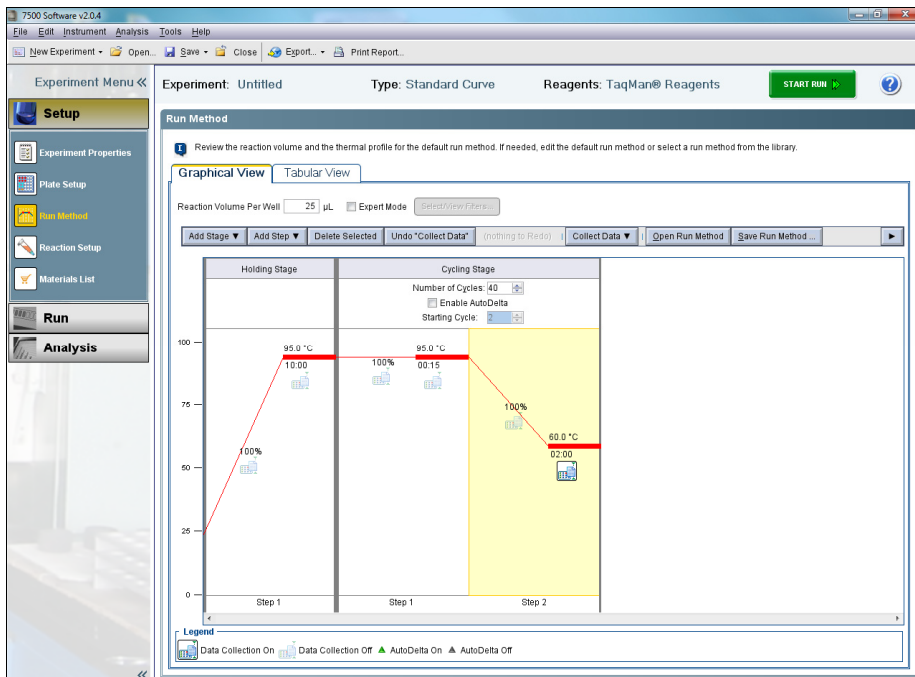


Figure 2. Run method.

# Protocol Sheet

---

## Real-time PCR detection

1. If the thermocycler is off, press the power button to switch on the instrument. Wait for the instrument to boot and display the Power status light. Switch on the computer connected to the thermocycler.
2. Ensure that the plate has been centrifuged for 1 min at 1000 g to remove any bubbles.
3. Open the tray and place the plate in the precision plate holder with the last row (row H) facing the front. Make sure the plate is properly aligned in the holder, well A1 should be positioned at the top-left corner of the tray. To close the tray door, press the tray to move it into the instrument while applying pressure to the right side of the tray at an angle.
4. Open the ABI 7500 7 v2.0.4 software.
5. Select "File"/"New Experiment"/"From Template". Select the "MicrobialDNAqPCR\_Template" file and click "Open".
6. Verify that the run method is correct.
7. Select "Run Menu".
8. Click "Start Run" in "Run Status" window.

## After the PCR run

1. To determine  $C_T$  values, set "Baseline" at 8 to 20 cycles and "Threshold" at 0.2.
2. Export  $C_T$  values.

For up-to-date licensing information and product-specific disclaimers, see the respective QIAGEN kit handbook or user manual. QIAGEN kit handbooks and user manuals are available at [www.qiagen.com](http://www.qiagen.com) or can be requested from QIAGEN Technical Services or your local distributor.

Trademarks: QIAGEN® (QIAGEN Group); Applied Biosystems® (Applied Biosystems Corporation or its subsidiaries); FAM™ (Life Technologies Corporation); TaqMan® (Roche Group). Registered names, trademarks, etc. used in this document, even when not specifically marked as such, are not to be considered unprotected by law.

