

Protocol Sheet

Applied Biosystems® 7900HT real-time PCR run setup instructions for Microbial DNA qPCR Arrays

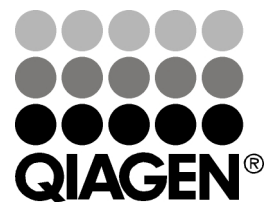
Important points before starting

- Please read the handbook supplied with the Microbial DNA qPCR Array, paying careful attention to the “Safety Information” and “Important Notes” sections, before beginning this procedure.
- Ensure the real-time PCR instrument is working properly. Refer to the manufacturer’s installation and maintenance manual if required.

Procedure

PCR protocol template set up

1. Open the ABI 7900HT SDS Version 2.4 software on the desktop of the computer that is connected to the ABI 7900HT instrument. Select “File”/“New”. The “New Document Wizard” dialog box will appear.
2. Select “Assay: Standard Curve (AQ)”, “Container: 384-well Clear Plate”, and “Template: Blank Template”. The field for “Barcode” is optional. Click “OK”.
3. Under the “Setup” tab, click the “Add Detector...” button at the bottom of the tab.
4. In the “Detector Manager” window, select “FAM” for the reporter dye, click the “Copy To Plate Document” button, and click the “Done” button (Figure 1). Ensure that “ROX” is selected for “Passive Reference”.



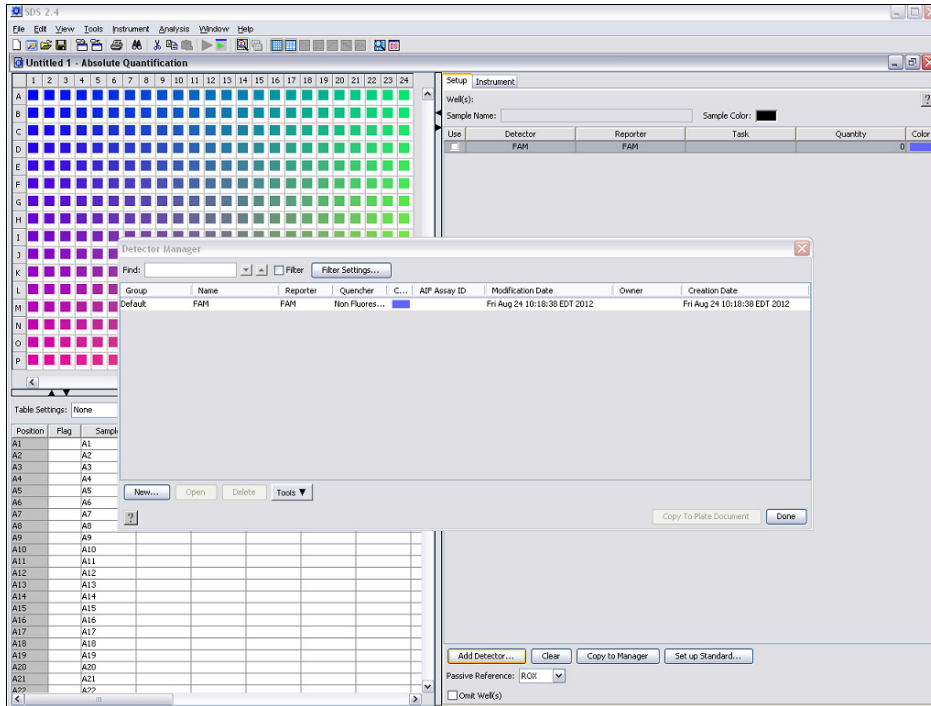


Figure 1. Experimental properties.

- Click the square button in the upper left corner of the 384-well layout panel (between the letter "A" and "1") to select all wells. Once selected, the 384-well table will be highlighted in yellow. Click the box next to "FAM". This selects "FAM" as the detector for all wells (Figure 2).

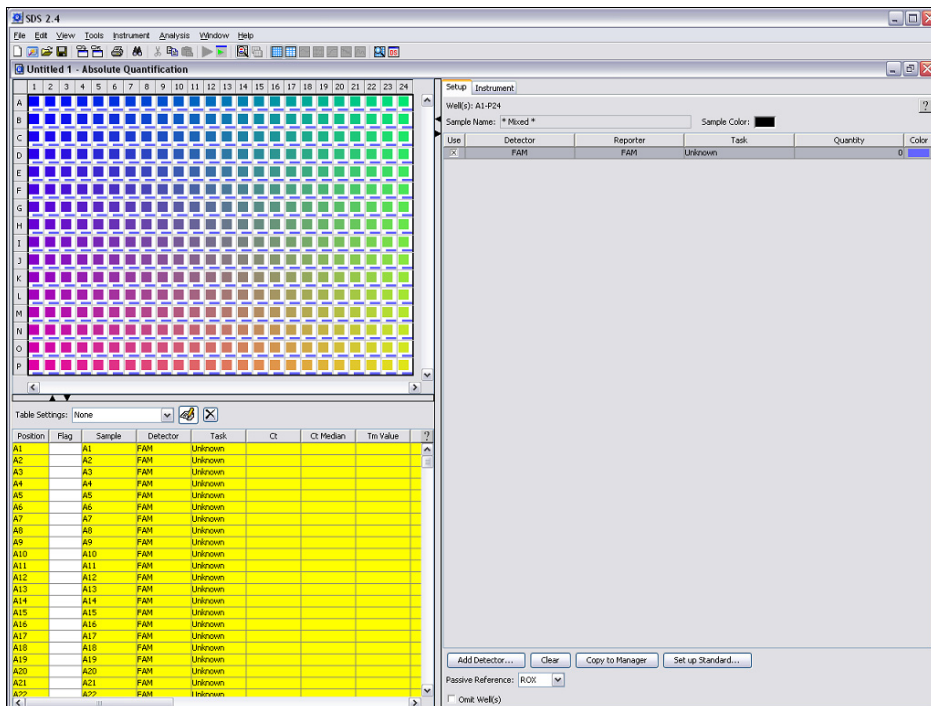


Figure 2. Selecting FAM™ as detector.

6. Click the "Instrument" tab, then the "Thermal Cycler"/"Thermal Profile" tabs (Figure 3).
7. Highlight and delete "Stage 1 (50°C for 2:00 minutes)" by clicking the mouse, dragging it across "Stage 1", and clicking the "Delete Step" button.
8. Stage 1: Enter 95.0°C for 10:00 min.
 Stage 2 (2 Steps):
 Step 1: 95.0°C for 0:15 (15 sec)
 Step 2: 60.0°C for 2:00 (2 min)
 Enter "40" for "Repeats".
9. Detect and record FAM fluorescence from every well during the annealing step of each cycle.
10. Ensure that "Standard" is checked for "Mode".
11. Type "10" for "Sample Volume (µL)".
12. Select "File", then "Save As" to save the template file. Save the file as "SDS Templates" (*.sdt) with the filename "MicrobialDNAqPCR_Template" and click "Save".

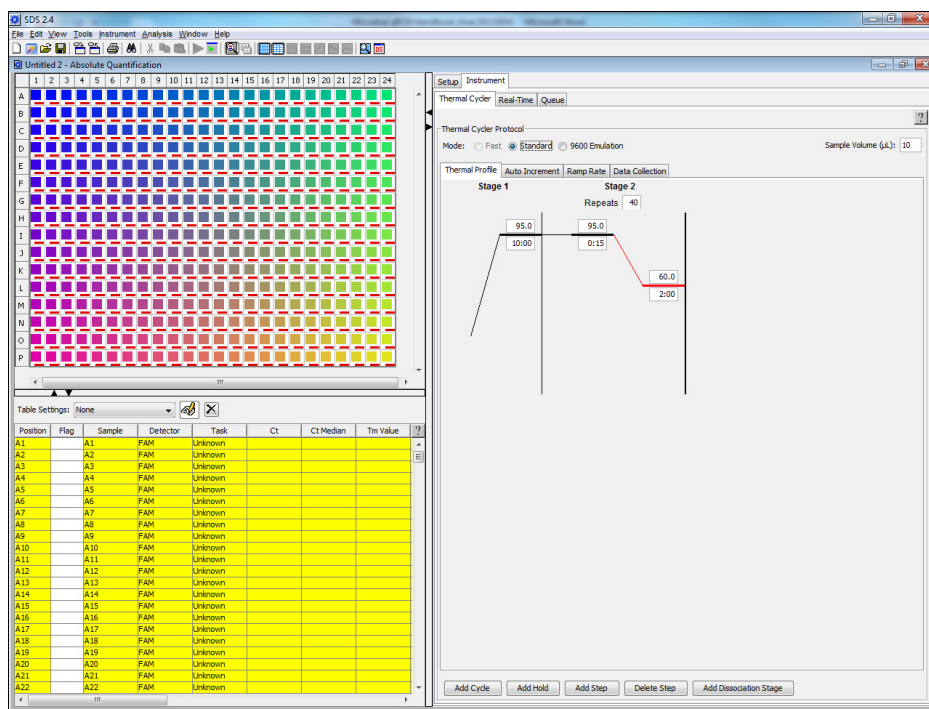


Figure 3. Run set up.

Protocol Sheet

Real-time PCR detection

1. If the thermocycler is off, press the power button to switch on the instrument. Wait for the instrument to boot and display the Power status light. Switch on the computer connected to the thermocycler.
2. Ensure that the plate has been centrifuged for 2 min at 2000 rpm to remove any bubbles.
3. Open the ABI 7900HT SDS Version 2.4 software.
4. Select "File"/"New". In the "New Document Wizard" dialog box, select "Browse" to load the MicrobialDNAqPCR_Template file. Then click "Finish". This will load the previously saved setup to the new plate document.
5. Save the new document under a new filename as "SDS Documents" (*.sds).
6. Click the "Instrument" tab. Click "Real-Time" tab, then click "Connect to Instrument" to connect the computer to the thermal cycler. Click "Open/Close" to open the plate tray and place your plate in the precision plate holder with A1 in the top left corner. Click "Start Run" to begin the PCR run. Wait 30 seconds to 1 min for the initial priming, then the run should start. The estimated run time will then appear on the screen.

After the PCR run

1. When the PCR run is complete, a small dialog box stating "The run completed successfully" will appear on the screen. Click "OK" to close the box.
2. To determine C_T values, Set "Baseline" at 8 to 20 cycles and "Threshold" at 0.2.
3. The C_T values will be displayed in the lower left panel for each well. To export the result to an Excel spreadsheet, select "File"/"Export"/"Results Table". The file will be saved as a Tab-delimited text file, and can be opened using Microsoft® Excel®.

For up-to-date licensing information and product-specific disclaimers, see the respective QIAGEN kit handbook or user manual. QIAGEN kit handbooks and user manuals are available at www.qiagen.com or can be requested from QIAGEN Technical Services or your local distributor.

Trademarks: QIAGEN® (QIAGEN Group); Applied Biosystems® (Applied Biosystems Corporation or its subsidiaries); FAM™ (Life Technologies Corporation); TaqMan® (Roche Group); Microsoft®, Excel® (Microsoft Corporation). Registered names, trademarks, etc. used in this document, even when not specifically marked as such, are not to be considered unprotected by law.

