

March 2017

AdnaTest ColonCancerSelect and ColonCancerDetect Handbook



12 (catalog number 395422)

12 (catalog number 396422)

For enrichment of tumor cells from whole blood of colon cancer patients and detection of colon cancer associated gene expression in enriched tumor cells

For in vitro diagnostic use

Version 1



395422 (AdnaTest ColonCancerSelect)

396422 (AdnaTest ColonCancerDetect)



QIAGEN GmbH, QIAGEN Strasse 1, 40724 Hilden,
GERMANY



1106497

Sample to Insight



Contents

Intended Use	4
Summary and Explanation	4
Principle of the Procedure	5
AdnaTest ColonCancerSelect	5
AdnaTest ColonCancerDetect	5
Materials Provided	7
Kit contents	7
Materials Required but Not Provided	8
AdnaTest ColonCancerSelect	8
AdnaTest ColonCancerDetect	9
Warnings and Precautions	10
Safety information	10
Application information	10
Patents	11
Reagent Storage and Handling	11
Storage	11
Handling	11
Specimen Handling and Storage	12
Sample preparation	12
Protocol: Enrichment of Tumor Cells Using AdnaTest ColonCancerSelect	13
Protocol: Detection of Colon Cancer Associated Gene Expression in Enriched Tumor Cells Using AdnaTest ColonCancerDetect	16

Protocol: Multiplex PCR	21
Interpretation of Results.....	23
Fragment analysis on the Agilent 2100 Bioanalyzer.....	23
Troubleshooting guide.....	26
Quality Control.....	26
Limitations.....	26
Performance Characteristics	27
Recovery	27
Specificity.....	27
Reproducibility	28
Precision	28
Interfering substances.....	29
Interfering conditions	30
Clinical studies.....	31
Reference	31
Abbreviations.....	31
Symbols.....	32
Ordering Information	33

Intended Use

The AdnaTest ColonCancerSelect is an in vitro diagnostic method intended for the immunochemical enrichment of circulating tumor cells from anti-coagulated whole blood samples obtained from colon cancer patients, through a combination of epithelial and tumor associated antigens.

The AdnaTest ColonCancerDetect is an in vitro diagnostic assay intended for the analysis of expression profiles of tumor cells by reverse transcription and multiplex PCR and subsequent densitometric analysis of the PCR products by automated capillary electrophoresis utilizing the Agilent® 2100 Bioanalyzer.

The AdnaTest ColonCancerSelect/Detect is not intended for screening purposes and not to be used as a diagnostic test to confirm the presence of colon cancer.

The product is intended to be used by professional users, such as technicians and physicians who are trained in molecular biological techniques.

Summary and Explanation

AdnaTest ColonCancerSelect enables the immunomagnetic enrichment of tumor cells via epithelial and tumor associated antigens. AdnaTest ColonCancerDetect is used for the analysis of colon cancer-associated gene expression in immunomagnetically enriched tumor cells by reverse transcription and PCR.

Principle of the Procedure

AdnaTest ColonCancerSelect

Antibodies against epithelial and tumor associated antigens are conjugated to magnetic beads for labeling of tumor cells in whole blood. Labeled cells are extracted by a magnetic particle concentrator (AdnaMag-L and AdnaMag-S) and are subsequently lysed (Figures 1 and 2).

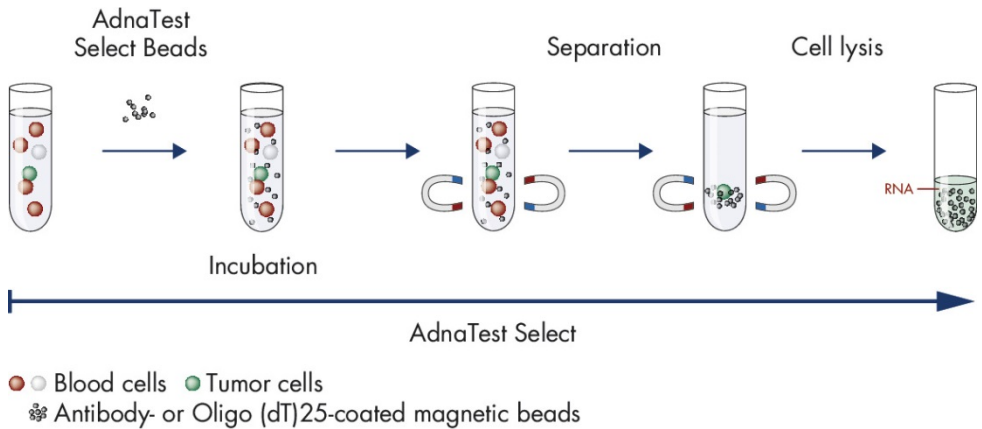


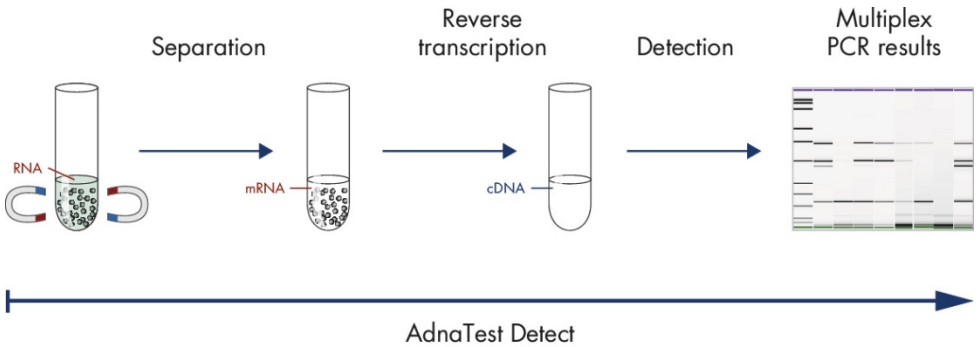
Figure 1. AdnaTest ColonCancerSelect: Immunomagnetic cell selection with multiple tumor associated antibodies.

The cell lysate is used for further analysis with AdnaTest ColonCancerDetect.

AdnaTest ColonCancerDetect

AdnaTest ColonCancerDetect contains Oligo (dT)₂₅ Beads for the isolation of mRNA from the lysate of pre-enriched tumor cells. Reverse transcription results in cDNA, which is subsequently used as template for tumor cell detection and characterization by multiplex

PCR. The AdnaTest PrimerMix ColonDetect allows the amplification of three tumor associated antigens and one control gene.



- Blood cells ● Tumor cells
- ⊞ Antibody- or Oligo (dT)25-coated magnetic beads

Figure 2. AdnaTest ColonCancerDetect: Multiplex PCR of various cancer associated tumor markers. In a second step the enriched cells are examined by RT-PCR for tumor associated expression patterns. The mRNA strands are reverse transcribed into cDNA. Subsequently, several associated tumor markers can be amplified using multiplex PCR and visualized.

The primers generate fragments of the following sizes:

- GA733-2: 395 bp
- CEA: 231 bp
- EGFR: 163 bp
- Actin: 120 bp (internal PCR control)

Note: Fragment sizes may vary slightly. Please use the AdnaTest Positive Control Colon for assignment of the detected signals.

Materials Provided

Kit contents

AdnaTest ColonCancerSelect			
Catalog number		395422	
Number of tests		12	
Collection Tubes	Collection Tubes (1.5 ml)	<input type="checkbox"/> COL <input type="checkbox"/> TUBE	3 x 5
Collection Tubes	Collection Tubes (15 ml)	<input type="checkbox"/> COL <input type="checkbox"/> TUBE	24
Red	ColonSelect Beads	CSB	1.2 ml
Red	AdnaTest Lysis/Binding Buffer	LBB	2 x 1.2 ml
	Handbook		1

AdnaTest ColonCancerDetect			
Catalog number	396422		
Number of tests	12		
AdnaTest RNA Reagents			Box 1
Red	AdnaTest Lysis/Binding Buffer	LBB	2 ml
Orange	Oligo(dT) ₂₅ Beads	OdT	280 µl
White	RNA Purification Buffer A	BA	4ml
White	RNA Purification Buffer B	BB	4ml
Purple	Tris-HCL Buffer	TB	2 ml
AdnaTest ColonCancerDetect			Box 2
Blue	AdnaTest PrimerMix ColonDetect	PMC	144 µl
Orange	AdnaTest Positive Control Colon (C+)	CONTROL +	56 µl
	Handbook		1

The AdnaTest ColonCancerDetect reagents are sufficient to analyze 6 PCR controls and 12 blood samples.

Materials Required but Not Provided

When working with chemicals, always wear a suitable lab coat, disposable gloves, and protective goggles. For more information, consult the appropriate safety data sheets (SDSs), available from the product supplier.

AdnaTest ColonCancerSelect

Equipment

- Tube rotator for 15 ml and 1.5 ml tubes (e.g., ELMi Ltd., cat. no. IMIX-03)

- Magnetic particle concentrators
 - AdnaMag-L (cat. no. 399921)
 - AdnaMag-S (cat. no. 399911)

Material

- AdnaTube (cat. no. 399932), when working with BD Vacutainer® ACD-A Tubes
- Sterile, RNase-free 10 ml glass or plastic pipettes and pipettor
- Sterile, RNase-free 1.5 ml reaction tubes (e.g., Sarstedt, cat. no. 72.690)
- Pipettes and RNase-free pipette tips with aerosol barrier, suitable for pipetting volumes from 100 µl to 1000 µl

Reagents

- Phosphate buffered saline (PBS), pH 7.0–7.3 (e.g., Fisher, cat. no. VX14190169, D-PBS)

AdnaTest ColonCancerDetect

Equipment

- Tube rotator for 1.5 ml tubes (e.g., ELMi Ltd., cat. no. IMIX-03)
- Magnetic particle concentrator AdnaMag-S (cat. no. 399911)
- Thermal block or water bath (50°C)
- Thermal cycler with a heated lid and a heating rate of 2°C/s.
- Agilent 2100 Bioanalyzer (Agilent Technologies)

Material

- Sterile, RNase-free thin-wall 0.2 ml PCR tubes
- Sterile, RNase-free 1.5 ml reaction tubes (e.g., Sarstedt, cat. no. 72.690)

- Pipettes and RNase-free pipette tips with aerosol barrier, suitable for pipetting volumes from 1 µl to 200 µl

Reagents

- Sensiscript® RT Kit (QIAGEN, cat. no. 205211, 50 reactions)
 - **Note:** The Sensiscript RT Kit (cat. no. 205211) is sufficient for only 25 samples because twice the volume is required for each reaction.
- Recombinant RNasin, RNase-inhibitor, 2.500 U (Promega, cat. no. N2511)
- HotStarTaq® Master Mix Kit (QIAGEN, cat. no. 203443, 250 U)
- Crushed ice

Warnings and Precautions

For in vitro diagnostic use

Safety information

When working with chemicals, always wear a suitable lab coat, disposable gloves, and protective goggles. For more information, please consult the appropriate safety data sheets (SDSs). These are available online in convenient and compact PDF format at www.qiagen.com/safety where you can find, view, and print the SDS for each QIAGEN kit and kit component.

Discard sample and assay waste according to your local safety regulations.

Application information

These tests must be performed by personnel skilled in molecular biological techniques.

Patents

AdnaTest ColonCancerDetect requires licenses of Hoffmann-La Roche AG, Basel. The purchase of AdnaTest ColonCancerDetect does not authorize the user to perform the PCR without license.

Reagent Storage and Handling

Storage

The AdnaTest ColonCancer system is delivered in three boxes. AdnaTest ColonCancerSelect (cat. no. 395422) and the AdnaTest RNA Reagent Box 1 (Box 1 of cat. no. 396422) must be stored at 2–8°C. The components must not be used beyond the expiration date.

AdnaTest ColonCancerDetect Box 2 (Box 2 of cat. no. 396422), containing the AdnaTest PrimerMix ColonDetect and AdnaTest Positive Control Colon, must be stored separately at –30 to –15°C. In order to prevent possible contaminations and repeated temperature changes, aliquot the primer mix. The components must not be used beyond the expiration date.

Handling

- ColonSelect Beads contain sodium azide as preservative. Sodium azide is cytotoxic and must, therefore, be removed before using the beads. (See “Protocol: Enrichment of Tumor Cells Using AdnaTest ColonCancerSelect, page 13.)
- All components and additional reagents provided by other suppliers must be stored according to their instructions. Safety advice of the respective manufacturers applies.
- Wear protective gloves to avoid contamination with DNA, RNA and RNases.
- Aliquot the ColonSelect Beads to avoid contamination.

- The test must be performed in the denoted sequence and must comply with all specifications stated in respect of incubation times and incubation temperatures.
- Discard samples if the selection beads agglutinate during cell enrichment.
- Perform sample processing, including reverse transcription and subsequent analysis of amplified PCR products, in different rooms, if possible, to avoid cross-contamination.
- The use of products from other suppliers than suggested may adversely affect the results.
- The safety and hygiene regulations of the laboratory must be respected (e.g., wear lab coats, protective goggles, gloves).

Specimen Handling and Storage

Sample preparation

- Blood samples must be taken before the application of therapeutic substances. Do not use the AdnaTest ColonCancerSelect earlier than 7 days after the last therapeutic intervention!
- Blood collection: If sample transportation is less than 4 hours, use tubes containing EDTA as anticoagulant (e.g., S Monovette® K3 EDTA, Sarstedt [cat. no. 01.1605.001]) to draw at least 7.5 ml of whole blood.
- If sample transportation is longer than 4 hours, use BD Vacutainer ACD-A Tubes (Becton Dickinson GmbH, cat. no. 366645 [EU]; 364606 [US]) to draw at least 8.5 ml of whole blood. Before further processing using the AdnaTest, 5 ml ACD-A blood must be transferred into an AdnaTube, cat. no. 399932.
- Blood has to be stored at 4°C immediately.
- Samples should be processed as soon as possible, but not later than 4 hours after blood withdrawal when using standard EDTA tubes or within 30 hours when using BD Vacutainer blood collection tubes in combination with AdnaTubes.
- The blood sample must not be hemolyzed.

Protocol: Enrichment of Tumor Cells Using AdnaTest ColonCancerSelect

Important points before starting

- Before beginning the procedure, read “Warnings and Precautions” (page 10), “Reagent Storage and Handling” (page 11) and “Specimen Handling and Storage” (page 12).
- It is necessary to remove sodium azide by washing the ColonSelect Beads prior to use, as described below in “Procedure A: Preparation of the ColonSelect Beads”.
- Please use the provided 1.5 ml collection tubes only for the protocol step indicated.

Things to do before starting

- Ensure that AdnaTest Lysis/Binding Buffer is equilibrated to room temperature. If a precipitate is observed, equilibrate the reagents to room temperature and mix until the precipitate is completely dissolved.

Procedure A: Preparation of the ColonSelect Beads

1. Resuspend the ColonSelect Beads thoroughly by pipetting; do not vortex!
2. Calculate the volume of ColonSelect Beads required for all samples to be processed (100 µl per sample), and transfer the calculated volume into a 1.5 ml reaction tube (not provided).

If more than 10 samples are processed use additional 1.5 ml reaction tubes.

3. Place the tube into the AdnaMag-S.
4. After 1 minute remove the supernatant with a pipette.

Note: Do not touch the beads when removing the supernatant!

5. Wash steps:

- 5a. Remove the magnet slider from the AdnaMag-S.
- 5b. Add 1 ml PBS and resuspend the beads by repeated pipetting.

- 5c. Place the magnet slider into the AdnaMag-S.
- 5d. After 1 minute remove the supernatant completely with a pipette.
- 5e. Repeat steps 5a to 5d twice (three washes in total).
6. Remove the tube from the AdnaMag-S, and resuspend the beads in PBS to the original volume (100 μ l per sample). Proceed with "Procedure B: Selection of tumor cells", below.

Procedure B: Selection of tumor cells

1. When using standard EDTA tubes, pipet 5 ml of a blood sample into a 15 ml Collection Tube (provided).

When using ACD-A blood in a BD Vacutainer ACD-A Tube, transfer 5 ml of blood into an AdnaTube.

Note: AdnaTubes are mandatory when using BD Vacutainer ACD-A Tubes.

2. Resuspend the ColonSelect Beads thoroughly (prepared in step 6 of Procedure A) by pipetting, and add 100 μ l of these beads to each blood sample.
3. Rotate tubes slowly (approximately 5 rpm) for 30 minutes at room temperature on a device allowing both tilting and rotation.
4. Place tubes into the AdnaMag-L without the magnet slider. Swing the AdnaMag-L downwards to release blood drops captured in the cap.
5. Insert the magnet slider and incubate the tubes in the AdnaMag-L for 3 minutes at room temperature.
6. Remove blood supernatant completely with a 10 ml pipette without touching the beads.

Note: Do not touch the beads when removing the supernatant!

7. Wash steps:
 - 7a. Remove the magnet slider from the AdnaMag-L.
 - 7b. Add 5 ml PBS. Close the tubes and shake the AdnaMag-L gently back and forth 5 times to resuspend the magnetic bead/cell complexes.
 - 7c. Swing the AdnaMag-L with the tubes downwards twice to release drops captured in the cap.

-
- 7d. Place the magnet slider into the AdnaMag-L and incubate for 1 minute at room temperature.
 - 7e. Remove supernatant completely with a pipette.
 - 7f. Repeat steps 7a to 7e twice (three washes in total).
 8. Remove the magnet slider from the AdnaMag-L.
 9. Resuspend the magnetic bead/cell complexes in 1 ml PBS and transfer each sample into a 1.5 ml reaction tube (not provided).
 10. Place reaction tubes into the AdnaMag-S with an inserted magnet slider.
Note: The magnet slider of the AdnaMag-S can be inserted in two positions. Always insert the slider with forward-facing white plastic film to make sure that the magnets are next to the reaction tubes.
 11. After 1 minute remove the supernatant completely with a pipette to optimize the following cell lysis.
 12. Remove the magnet slider from the AdnaMag-S.
 13. Add 200 μ l AdnaTest Lysis/Binding Buffer (equilibrated to room temperature) to each reaction tube. Resuspend by pipetting at least five times.
 14. Insert the magnet slider into the AdnaMag-S, and incubate for 1 minute.
 15. Transfer each supernatant (cell lysate) into a new 1.5 ml reaction tube.
 16. Discard the tubes with the beads.
 17. Continue with mRNA isolation (see "Protocol: Detection of Colon Cancer Associated Gene Expression in Enriched Tumor Cells Using AdnaTest ColonCancerDetect", page 16) immediately, or store the cell lysates at -20°C for no longer than 2 weeks.

Protocol: Detection of Colon Cancer Associated Gene Expression in Enriched Tumor Cells Using AdnaTest ColonCancerDetect

Important points before starting

- Before beginning the procedure, read “Warnings and Precautions” (page 10) and “Reagent Storage and Handling” (page 11).
- Procedures A to C describe the isolation of mRNA and reverse transcription.
- Please use the provided 1.5 ml collection tubes only for the protocol step indicated.

Things to do before starting

- Ensure that AdnaTest Lysis/Binding Buffer is equilibrated to room temperature. If a precipitate is observed, equilibrate the reagents to room temperature and mix until the precipitate is completely dissolved.
- Equilibrate RNA Purification Buffer A and RNA Purification Buffer B to room temperature. Place Tris-HCL Buffer on ice.
- Thaw 10x Buffer RT and dNTPs, from the Sensiscript RT Kit, at room temperature. Mix by vortexing. Centrifuge briefly and store on ice. Thaw RNase-free water (part of the Sensiscript RT Kit).
- Adjust a thermal block or water bath to 50°C.

Procedure A: Preparation of Oligo(dT)₂₅ Beads

1. Resuspend the Oligo(dT)₂₅ Beads thoroughly by pipetting. Do not vortex!
2. Calculate the volume of the beads required for all samples to be processed (20 μ l per sample plus 10%), and transfer the calculated volume into an RNase-free 1.5 ml reaction tube (not provided).

3. Place the tube into the AdnaMag-S.

Note: The magnet slider of the AdnaMag-S can be inserted in two positions. Always insert the slider with forward-facing white plastic film to make sure that the magnets are next to the reaction tubes.

4. After 1 minute remove the supernatant with a pipette.
5. Wash steps:
 - 5a. Remove the magnet slider from the AdnaMag-S.
 - 5b. Add the original volume (step 2, page 16) AdnaTest Lysis/Binding Buffer and resuspend the beads by repeated pipetting. Resuspend gently to avoid foaming.
 - 5c. Insert the magnet slider into the AdnaMag-S.
 - 5d. After 1 minute remove the supernatant completely.
 - 5e. Repeat steps 5a to 5d once (two washes in total).
6. Remove the tube from the AdnaMag-S, and resuspend the beads in AdnaTest Lysis/Binding Buffer to the original volume (step 2, page 16). Proceed with "Procedure B: mRNA isolation".

Procedure B: mRNA isolation

1. Add 20 μ l of Oligo(dT)₂₅ Beads (step 6, above) to each tube containing cell lysate (step 15, page 15).
2. Rotate tubes slowly (approximately 5 rpm) for 10 minutes at room temperature on a device allowing both tilting and rotation.
3. Place the tubes into the AdnaMag-S without the magnet slider. Swing the AdnaMag-S downwards to release beads and liquid captured in the cap.
4. Insert the magnet slider and remove the supernatant after 1 minute.
5. Wash steps 1:
 - 5a. Remove the magnet slider from the AdnaMag-S.
 - 5b. Add 100 μ l RNA Purification Buffer A to each tube and resuspend the beads by repeated pipetting. To avoid any loss of beads, rinse lid and tube wall thoroughly.
 - 5c. Insert the magnet slider into the AdnaMag-S.

- 5d. After 1 minute remove the supernatant completely.
- 5e. Repeat steps 5a to 5d once (two washes in total).
6. Wash steps 2
 - 6a. Remove the magnet slider from the AdnaMag-S.
 - 6b. Add 100 μ l RNA Purification Buffer B to each tube. Resuspend the beads by pipetting, and transfer into new 1.5 ml reaction tubes (provided).
 - 6c. Insert the magnet slider into the AdnaMag-S.
 - 6d. After 1 minute remove the supernatant completely. This step has to be carried out carefully (watch the pellet) since the beads might slide and could be removed by mistake.
 - 6e. Repeat steps 6a to 6d once in the same reaction tubes (two washes in total).
7. Remove the magnet slider from the AdnaMag-S.
8. Add 100 μ l ice cold Tris-HCL Buffer to each tube, and resuspend the beads by pipetting.
9. Insert the magnet slider into the AdnaMag-S.
10. After 1 minute remove the supernatant completely.
11. Remove the magnet slider from the AdnaMag-S.
12. Resuspend the mRNA/bead-complex in 29.5 μ l RNase-free water.
13. Transfer the tubes to a thermal block or water bath, and incubate for 5 minutes at 50°C.
14. Place the tubes on ice immediately for at least 2 minutes.
15. Continue immediately (within 5 minutes) with the reverse transcription (Procedure C: Reverse transcription using the Sensiscript RT Kit).
Do not store the mRNA/bead complex!

Procedure C: Reverse transcription using the Sensiscript RT Kit

1. Prepare the RT Master Mix on ice. The RT Master Mix is prepared as shown in Table 1 according to the number of samples.

The volume of the RT Master Mix should be 10% greater than calculated for the total number of reverse transcription reactions. A negative control reaction without addition of mRNA must always be prepared (RT control).

2. Vortex the RT Master Mix. Centrifuge briefly, and pipet 10.5 µl for each reaction into 0.2 ml PCR tubes.
3. Resuspend the mRNA/bead complexes (step 10, page 18) carefully with a pipette. Transfer the total volume into the 0.2 ml PCR reaction tube containing the RT Master Mix. Mix thoroughly by repeated pipetting.

Table 1. Reverse transcription reaction setup

Component	Volume
RT master mix	
10x Buffer RT	4.0 µl
dNTP Mix (5 mM each dNTP)	4.0 µl
RNase inhibitor, 40 U/µl (Promega)	0.5 µl
Sensiscript Reverse Transcriptase	2.0 µl
Template RNA*	29.5 µl
mRNA/bead complex or RNase free water	
Total volume	40.0 µl

* As RT control add 29.5 µl of RNase-free water instead of mRNA/bead complex. The volume of the mRNA/bead complex may vary slightly. Always use the total volume of this in the reverse transcription reaction.

4. cDNA is synthesized in a thermal cycler under the following conditions (Table 2).

Table 2. Reverse transcription program

Step	Time	Temperature
Reverse transcription	60 minutes	37°C
Denaturation	5 minutes	93°C
Cooling	∞	4°C

5. Place reaction tubes with the cDNA on ice or store at -20 °C for a maximum of 4 weeks.

6. Continue with “Protocol: Multiplex PCR”, page 21.

Protocol: Multiplex PCR

Important point before starting

- Before beginning the procedure, read “Warnings and Precautions” (page 10) and “Reagent Storage and Handling” (page 11).

Things to do before starting

- Thaw HotStarTaq Master Mix (QIAGEN), AdnaTest Positive Control Colon, AdnaTest PrimerMix ColonDetect and RNase-free water. Vortex, centrifuge quickly and store on ice.

Procedure

1. The PCR Master Mix is prepared as shown in Table 3 according to the number of samples.

The volume of the PCR Master Mix should be at least 10% greater than the requirement calculated from the number of samples. Note that an AdnaTest Positive Control Colon, RNase-free water as negative control and the RT control must always be included.

2. For each preparation dispense 42.0 µl of the PCR Master Mix into 0.2 ml PCR reaction tubes. Resuspend the cDNA/bead mix by pipetting and add 8.0 µl of it to each reaction tube.

Note: As negative control add 8.0 µl of RNase-free water instead of cDNA.

Table 3. Preparation of the multiplex PCR

Component	Volume
Multiplex PCR master mix	
HotStarTaq Master Mix	25.0 µl
RNase-free water	13.0 µl
AdnaTest PrimerMix ColonDetect	4.0 µl
cDNA or RT control or Negative control (RNase-free water) or AdnaTest Positive Control Colon, each:	8.0 µl
Total volume	50.0 µl

3. A thermal cycler is used for the PCR following the program described in Table 4. Run the thermal cycler with a ramp of 2°C/second. The PCR is performed with a total of 38 cycles.

Table 4. PCR cycling program

Step	Time	Temperature
Initial activation step	15 minutes	95°C
3-step cycling		
Denaturation	45 seconds	94°C
Annealing	45 seconds	58°C
Extension	45 seconds	72°C
Final extension	10 minutes	72°C
Cooling	∞	4°C

Interpretation of Results

Fragment analysis on the Agilent 2100 Bioanalyzer

Analysis is performed with the Agilent 2100 Bioanalyzer (Agilent Technologies) on a DNA 1000 LabChip®. Follow the instructions of the DNA 1000 LabChip manual and make sure that no beads are transferred into the LabChip. Magnetic beads in the gel can cause false results.

1. Start the Bioanalyzer software “2100 expert”. Select **Instrument** under **Contexts** and then click the **Assay** button next to **Assay Selection**.
2. Select **Electrophoresis > DNA 1000 Series II.xsy**. Prepare the chip and start the run.
3. For evaluation of the results, set a detection threshold:
 - 3a. Select **Data** under **Contexts** and then click the **Assay Properties** tab. Select **Global** and **Normal** from the drop-down menu on the right.
 - 3b. Select **Sample Setpoints > Integrator > height threshold (FU)** and set this value to **0** (default value is **20**) to detect all signals.

Analysis of the results

The test is considered positive if a PCR fragment of at least one tumor associated transcript is clearly detected.

If you are using the Agilent 2100 Bioanalyzer, peaks with a concentration of ≥ 0.10 ng/ μ l are positive (Figure 3).

The fragment of the control gene actin must show in all test samples (internal PCR control). An actin signal provides a positive control for a successful cell separation, reverse transcription and multiplex PCR. Negative control and RT control samples must not show any bands larger than 80 base pairs (primer-dimers).

A fragment larger than 900 bp indicates contamination with genomic DNA, suggesting that a problem occurred during cell separation. The results are invalid in this case.

IMPORTANT: If the protocol is not followed exactly, this may result in false-negative or false-positive results.

In case assistance is needed to interpret the results, please do not hesitate to contact our support team.

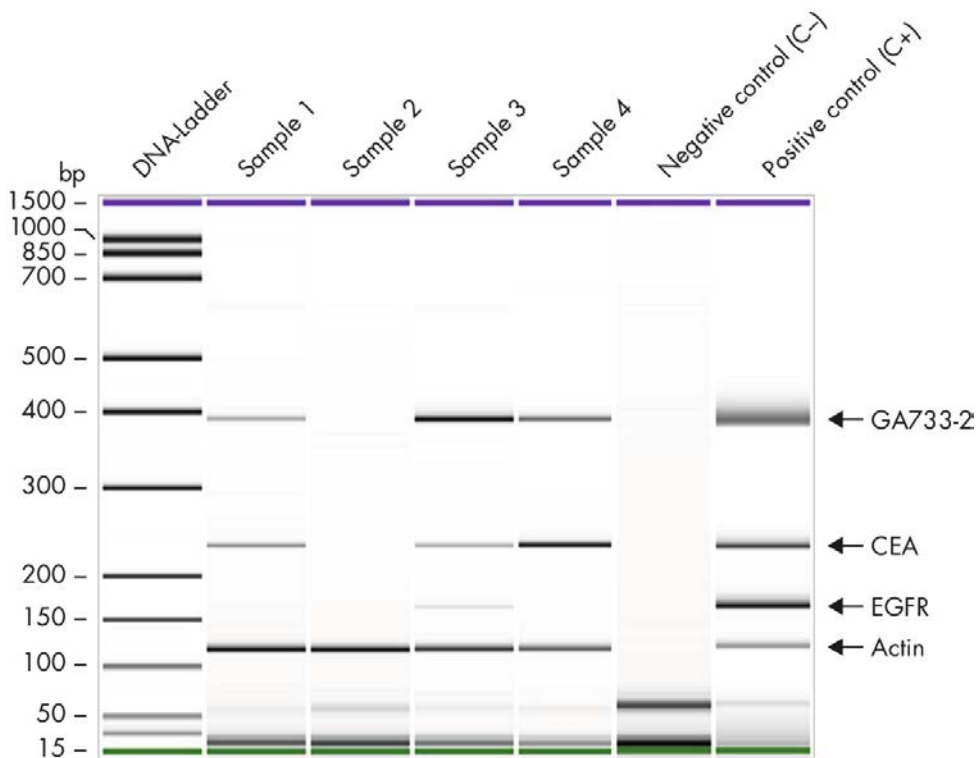


Figure 3. AdnaTest ColonCancerDetect results of samples analyzed with an Agilent 2100 Bioanalyzer. The first lane shows the DNA size standard (DNA-Ladder). Samples 1 and 4 are positive for GA733-2 and CEA; sample 2 is negative; and sample 3 is positive for GA733-2, CEA and EGFR. Actin is detected in samples 1 to 4. The PCR negative control (C-) and positive control (C+) are shown in the last two lanes.

Troubleshooting guide

See the Frequently Asked Questions page at our Technical Support Center: www.qiagen.com/FAQ/FAQList.aspx. The scientists in QIAGEN Technical Services are always happy to answer any questions you may have about either the information and/or protocols in this handbook or sample and assay technologies (for contact information, visit www.qiagen.com).

Quality Control

In accordance with QIAGEN's ISO-certified Quality Management System, each lot of AdnaTest ColonCancerSelect and AdnaTest ColonCancerDetect is tested against predetermined specifications to ensure consistent product quality.

Limitations

All reagents may exclusively be used in in vitro diagnostics.

The product is only to be used by personnel specially instructed and trained in in vitro diagnostics procedures.

It is important that the operator reads the instructions for use thoroughly before using the system.

Strict compliance with the instructions for use is required for optimal PCR results.

Check the expiration dates printed on the box and labels of all components. Do not use components beyond their expiration date.

Any diagnostic results that are generated must be interpreted in conjunction with other clinical or laboratory findings.

Performance Characteristics

Recovery

Two and 10 cultured T84 colon cancer cells were spiked into blood samples from healthy donors to determine the recovery rates achieved with AdnaTest ColonCancerSelect/Detect (Table 5).

Table 5. AdnaTest ColonCancer recovery rate of tumor cells spiked into blood samples from healthy donors

	Total number of samples	Number of positives	Recovery
Two tumor cells spiked into 5 ml blood	63	48	76%
Ten tumor cells spiked into 5 ml blood	41	41	100%

The recovery rate is 76% for detection of 2 tumor cells spiked into 5 ml blood from healthy donors. The detection of 10 cells spiked into 5 ml blood from healthy donors is 100%.

Specificity

AdnaTest ColonCancerSelect/Detect was used to analyze 106 healthy donors to determine the rate of false positives at the given cut-off (0.15 ng/ μ l fragment concentration for each gene profile included, except for actin).

Table 6. Determination of specification

Controls	Total number of samples	Number of false positives	Specificity (%)
Healthy donors	106	2 (2%)	98

AdnaTest ColonCancerSelect/Detect demonstrated a specificity of 98% (Table 6).

Reproducibility

Twenty blood samples from healthy donors were spiked with 10 T84 colon cancer cells per sample. Blood samples were analyzed by two operators using AdnaTest ColonCancerSelect/Detect to determine the reproducibility. The intra-assay and the inter-assay reproducibility were 100% (Table 7).

Table 7. Reproducibility of AdnaTest ColonCancer Select/Detect

Operator	Positive AdnaTest result/samples	Intra-assay reproducibility (%)	Inter-assay reproducibility (%)
A	10/10	100	100
B	10/10	100	100

Precision

To determine the precision, aliquots of cDNA were pooled and analyzed using AdnaTest ColonCancerDetect. Two operators analyzed 30 cDNA samples, consisting of 3 independent measurements of 10 samples. The intra-assay and inter-assay precision were 100% (Table 8).

Table 8. Precision of AdnaTest ColonCancerDetect

Operator	Positive AdnaTest result/samples	Intra-assay precision (%)	Inter-assay precision (%)
A	30/30	100	100
B	30/30	100	100

Interfering substances

Anticoagulants

When drawing and transporting blood, use of anticoagulants is mandatory. However, heparin and citrate lead to aggregate formation after addition of AdnaTest immunomagnetic beads, which can result in a lack of test results or false test results. However, EDTA and ACDA (citrate/dextrose/adenine solution A) are compatible with AdnaTest immunomagnetic beads.

Hemolysis

Hemolysis in blood samples (plasma fraction appears red) is, in most cases, due to incorrect transportation or storage conditions. Such samples may give false-negative results and should be discarded.

Chemotherapeutics, targeted therapy drugs and anti-hormonal regimens

Chemotherapeutics (taxanes, cisplatin, oxaliplatin, 5-FU, anthracycline, irinotecan, etc.) are potent cytotoxins and cause damage or rapid cell death in a blood sample. This results in a high likelihood of false-negative results when using AdnaTest immunomagnetic beads. After administration of these substances, the human body needs around 5–7 days to detoxify them (Table 9). Blood samples drawn during this time must not be used with AdnaTest immunomagnetic beads.

Table 9. Half-lives of chemotherapeutics

Drug	Half life	Reference
5-Fluoracil	Up to 20 minutes	www.drugs.com/pro/fluorouracil-injection.html
Docetaxel	Up to 11.1 hours	www.drugs.com/pro/docetaxel.html
Cis-platinum	Up to 30 minutes	www.drugs.com/pro/cisplatin.html
Carbo-platinum	Up to 5.9 hours	www.drugs.com/pro/carboplatin.html
Paclitaxel	Around 25.4 hours	www.drugs.com/pro/paclitaxel.html

The same precaution is also recommended for targeted therapy regimens such as antibodies (Herceptin[®], bevacizumab, cetuximab, etc.), tyrosine kinase blockers (olaparib, Iressa[®], Erbitux[®], lapatinib, etc.) and anti-hormonal drugs (tamoxifen, abiraterone, enzalutamide, etc.) administered as a single drug or in combination with chemotherapeutics.

In clinical trials demonstrating the prognostic value of circulating tumor cells (CTC) identified and characterized using AdnaTest immunomagnetic beads, no negative interference of chemotherapeutics, targeted therapies or anti-hormonal therapies was observed, provided the waiting period of at least 7 days after administration of the drug was complied with. Furthermore, a negative impact of common co-medications (aspirin, ibuprofen, aprepitant, steroids, etc.) is unlikely but is being monitored.

Interfering conditions

Blood clotting

In the context of clinical trials, we observed blood clotting after incubation with AdnaTest immunomagnetic beads – most frequently in blood samples from patients in a late disease state. Blood samples that exhibit clotting are difficult to process during the AdnaTest workflow due to increased viscosity and are difficult to pipet. They also contain an unacceptably high number of contaminating leukocytes, which leads to false-positive results. Such samples must be discarded.

Benign organic disease and chronic inflammatory conditions

Benign organic disease and chronic inflammation, such as arthritis, benign prostatic hyperplasia (BPH), Crohn's disease, etc., do not lead to false-positive AdnaTest results.

Acute allergy

With acute allergic conditions, there is an increased number of contaminating leucocytes after CTC enrichment using AdnaTest immunomagnetic beads. Therefore, false-positive results cannot be fully excluded.

Clinical studies

Blood samples were analyzed from 18 patients with metastatic colon cancer before therapy and during the early-stage therapy to enable comparison of the clinical CT data (obtained 3 months after starting therapy) with the AdnaTest results. Overall CTC positivity before therapy was 67% (12/18). Of these 12, patients 4 did not respond to therapy, 2 showed stable disease and 6 were responders (partial remission). CTC persisted in 75% of the non-responders but disappeared during early stage of therapy in 100% of the responder group. These findings indicate that CTC analysis in metastatic colon cancer is an early indicator of therapy response. (Lankiewicz et al. 2008).

Reference

Lankiewicz, S., Zimmermann, S., Hollmann, C., Hillemann, T., and Greten, T.F. (2008) Circulating tumour cells as a predictive factor for response to systemic chemotherapy in patients with advanced colorectal cancer. *Mol. Oncol.* **2**, 349–55.

Abbreviations

AdnaMag-L Magnetic particle concentrator (-large)

AdnaMag-S	Magnetic particle concentrator (-small)
bp	Base pairs
C+	Positive control
C-	Negative control
cDNA	Complementary deoxyribonucleic acid
CEA	Carcinoembryonic antigen
DNA	Deoxyribonucleic acid
dNTPs	Deoxynucleotide triphosphates
EGFR	Epidermal growth factor receptor
GA733-2	Gastrointestinal tumor associated antigen 733-2
kb	kilobases
mRNA	Messenger ribonucleic acid
PCR	Polymerase chain reaction
RNase	Ribonuclease
rpm	Revolutions per minute
RT	Reverse transcription

Symbols



Contains reagents sufficient for <N> tests



Use by



Temperature limitation



Catalog number



Consult instructions for use



Manufacturer



In vitro diagnostic medical device



Material number



Global Trade Item Number

Ordering Information

Product	Contents	Cat. no.
AdnaTest ColonCancerSelect	For isolation of CTCs and the subsequent extraction of mRNA from human whole blood for 12 preparations	395422
AdnaTest ColonCancerDetect	RT-PCR kit for detection of colon cancer-associated gene expression in enriched tumor cells	396422
Related products		
AdnaTube	12 sample tubes containing EDTA. Use only with anticoagulated blood collected in A-CDA blood collection tubes from BD	399932
AdnaMag-L	For 8 tubes, 15 ml	399921
AdnaMag-S	For 8 tubes, 1.5 ml	399911
Sensiscript RT Kit (50)	For 50 reverse-transcription reactions:* Sensiscript Reverse Transcriptase, 150 µl 10x Buffer RT, 100 µl dNTP Mix (contains 5 mM each dNTP), 1.1 ml RNase-free water	205211
HotStarTaq Master Mix Kit (250 U)	3 x 0.85 ml HotStarTaq Master Mix (contains 250 units HotStarTaq DNA Polymerase, PCR Buffer with 3 mM MgCl ₂ , and 400 µM of each dNTP) and 2 x 1.7 ml RNase-Free Water	203443

* The Sensiscript RT Kit (50) is sufficient for only 25 samples using AdnaTest ColonCancerDetect because twice the volume is required for each reaction.

For up-to-date licensing information and product-specific disclaimers, see the respective QIAGEN kit handbook or user manual. QIAGEN kit handbooks and user manuals are available at www.qiagen.com or can be requested from QIAGEN Technical Services or your local distributor.

Limited License Agreement for AdnaTest ColonCancerSelect and AdnaTest ColonCancerDetect

Use of this product signifies the agreement of any purchaser or user of the product to the following terms:

1. The product may be used solely in accordance with the protocols provided with the product and this handbook and for use with components contained in the kit only. QIAGEN grants no license under any of its intellectual property to use or incorporate the enclosed components of this kit with any components not included within this kit except as described in the protocols provided with the product, this handbook, and additional protocols available at www.qiagen.com. Some of these additional protocols have been provided by QIAGEN users for QIAGEN users. These protocols have not been thoroughly tested or optimized by QIAGEN. QIAGEN neither guarantees them nor warrants that they do not infringe the rights of third-parties.
2. Other than expressly stated licenses, QIAGEN makes no warranty that this kit and/or its use(s) do not infringe the rights of third-parties.
3. This kit and its components are licensed for one-time use and may not be reused, refurbished, or resold.
4. QIAGEN specifically disclaims any other licenses, expressed or implied other than those expressly stated.
5. The purchaser and user of the kit agree not to take or permit anyone else to take any steps that could lead to or facilitate any acts prohibited above. QIAGEN may enforce the prohibitions of this Limited License Agreement in any Court, and shall recover all its investigative and Court costs, including attorney fees, in any action to enforce this limited License Agreement or any of its intellectual property rights relating to the kit and/or its components.

For updated license terms, see www.qiagen.com.

Trademarks: QIAGEN[®], Sample to Insight[®], HotStarTaq[®], Sensiscript[®] (QIAGEN Group); Agilent[®] (Agilent Technologies, Inc.); ERBITUX[®] (ImClone LLC., a wholly-owned subsidiary of Eli Lilly and Company); Herceptin[®] (Genentech, Inc.); IRESSA[®] (AstraZeneca Group) LabChip[®] (Caliper Life Sciences, Inc.); Sarsted[®], S-Monovette[®] (Sarstedt AG and Co.); Vacutainer[®] (Becton Dickinson and Company).

HB-2343-001 © 2017 QIAGEN, all rights reserved.

This page intentionally left blank

Ordering www.qiagen.com/shop | Technical Support support.qiagen.com | Website www.qiagen.com