
Installing and Uninstalling QIAxcel® BioCalculator Software

This document describes how to install and uninstall BioCalculator Software from your computer. It also provides brief information about new RNA and Fast Analysis modes, which are found in BioCalculator Software v3.2.

Installing BioCalculator Software

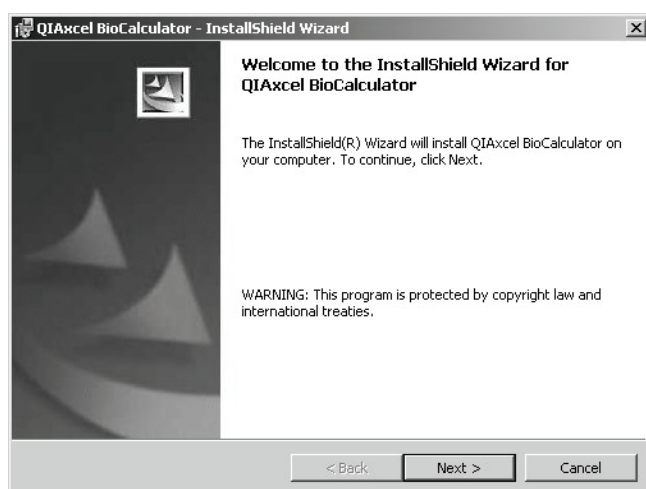
Important points before starting

- Previously installed versions of the BioCalculator Software must be uninstalled before the new version can be installed (see page 5).
- Before launching the newly installed BioCalculator Software for the first time, the QIAxcel instrument must be switched off and then back on to ensure that the firmware update is uploaded to the instrument.
- The software key should be removed before starting the installation procedure.

Procedure

1. **Insert the BioCalculator Software installation CD into the CD drive.**
2. **Browse to the CD and double-click the BioCalculator.msi file to open it.**

The InstallShield® wizard appears.

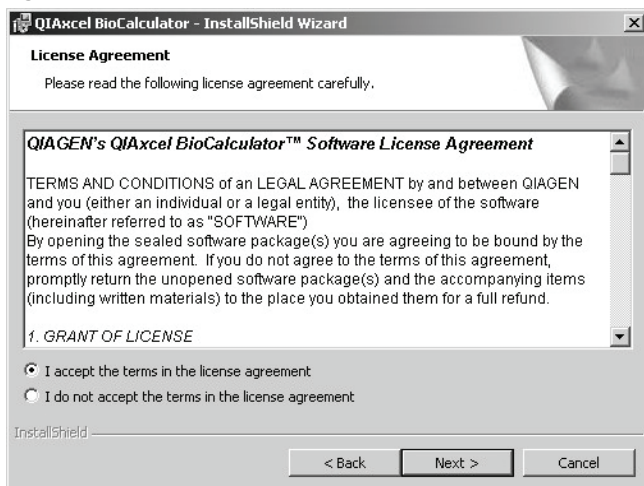


3. Click the “Next” button to continue.

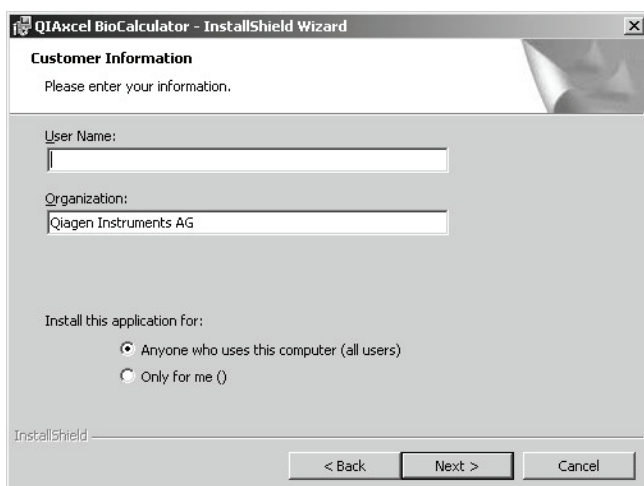
If the software is not installed on the computer, the license agreement appears.

If the “Program maintenance” wizard appears, the BioCalculator Software is already installed and the old version must be removed before the new version can be installed (see page 5).

4. Read the license agreement carefully, select “I accept the terms in the license agreement”, and click the “Next” button to continue.

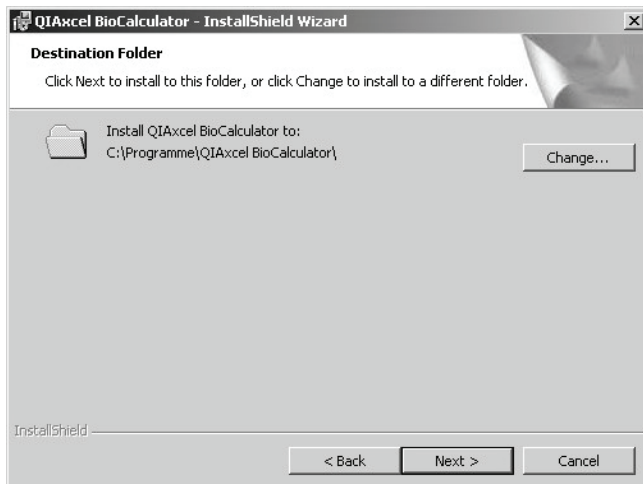


5. Enter your user name and the name of your organization. Select a sharing option, and click the “Next” button to continue.



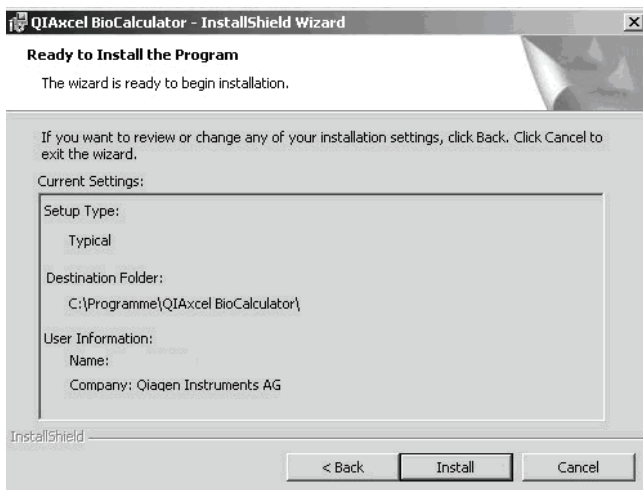
6. Specify the name and location of the destination folder, and click the “Next” button to continue.

If you do not wish to use the default folder, click the “Change” button to specify a new name or location.



7. Review the installation settings.

Click the "Back" button to change any of the settings.

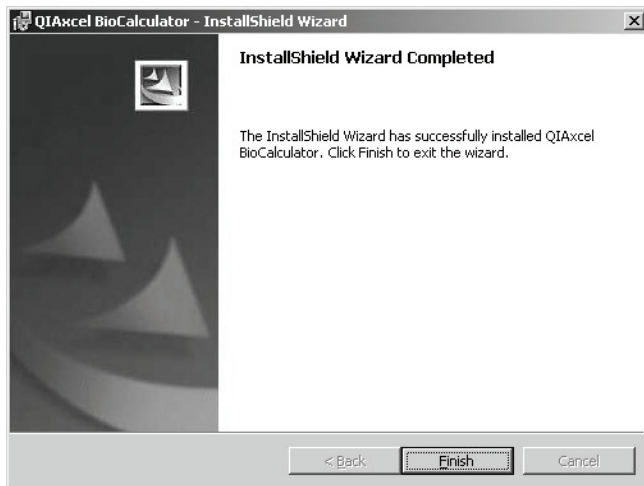


8. Click the "Install" button to start the installation. A progress bar indicating the status of the installation appears.

The installation can be stopped by clicking "Cancel".



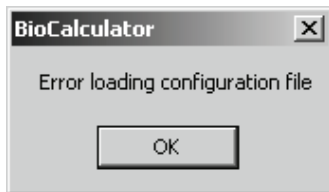
9. When installation is complete, click the "Finish" button to close the wizard.



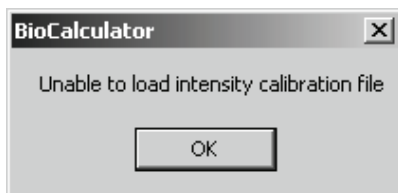
10. **Switch the QIAxcel off and then back on to ensure that the instrument firmware is updated.**

When the BioCalculator Software is launched for the first time, two messages appear.

11. **When the first message is displayed, click "OK" to initiate automatic creation of the configuration file.**



12. **When the second message is displayed, click "OK" to initiate automatic creation of the calibration file.**



Uninstalling BioCalculator Software

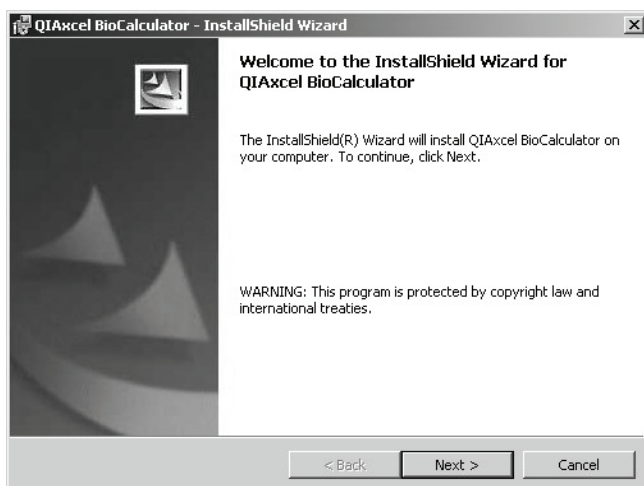
Important point before starting

- BioCalculator Software must be uninstalled before installing a newer version of the software.

Procedure

1. Insert the BioCalculator Software installation CD into the CD drive.
2. Browse to the CD and double-click the BioCalculator.msi file to open it.

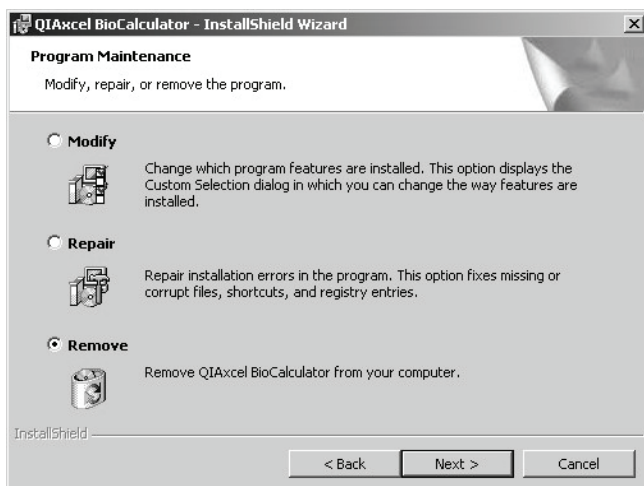
The InstallShield wizard appears.



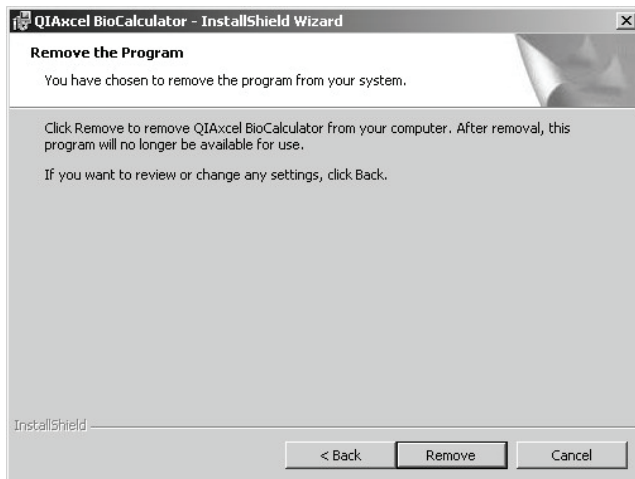
3. Click the "Next" button to continue.

If the software is already installed on the computer, the "Program Maintenance" dialog box is displayed.

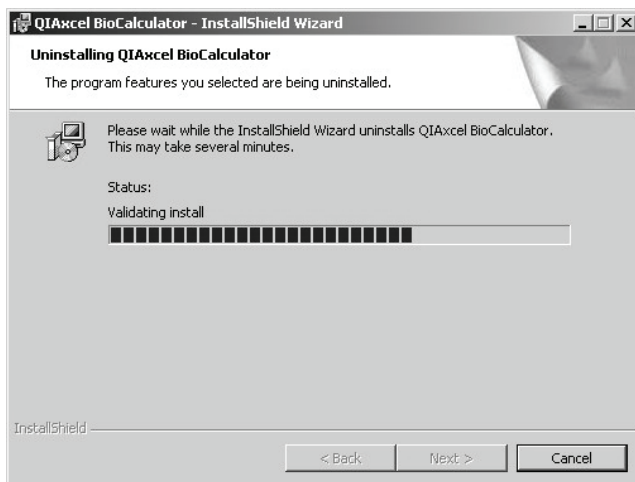
If the license agreement appears, a previous version of BioCalculator Software is not installed (see page 2).



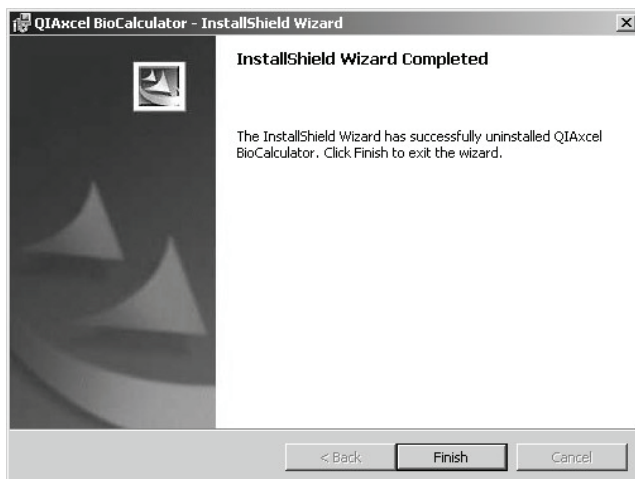
4. Select "Remove", and click the "Next" button to continue.
5. The "Remove the Program" dialog box appears. To uninstall the software, click the "Remove" button.



6. **A progress bar indicating the status of the software removal procedure is displayed.**
The software removal procedure can be stopped by clicking "Cancel".



7. **When BioCalculator Software has been uninstalled, click the "Finish" button to close the wizard.**



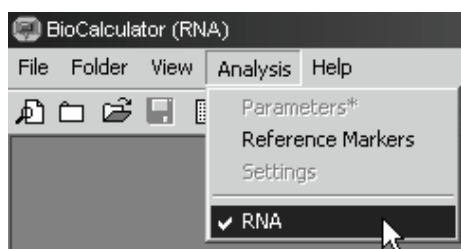
8. **Navigate to the folder C:\Program Files\QIAxcel BioCalculator and delete the hdactrl.cfg and hdactrl-fa.cfg files, if available.**
After these files have been deleted, installation of a newer version of BioCalculator Software can be performed (see page 1).

Software modes

When using the QIAxcel RNA QC Kit V2.0 (cat. no. 929104), QIAxcel DNA High Resolution Kit (cat. no. 929002), QIAxcel DNA Screening Kit (cat. no. 929004), or QIAxcel DNA Large Fragment Kit (cat. no. 929006), make sure to insert the blue software key into the USB port of the computer. The red software key must be used with the QIAxcel DNA Fast Analysis Kit (cat. no. 929008).

RNA mode

BioCalculator Software V3.2 has a separate mode for analysis of RNA. To switch to RNA mode, select "Analysis/RNA" in the menu bar.



Note: It is not possible to switch from DNA to RNA or RNA to DNA mode if any data files are open. Make sure all data files are closed.

In RNA mode, the layout of the "Folder view" window is different to that in DNA mode, and the results of RNA analysis are displayed (Figure 1A and 1B, page 8). The electropherogram is also displayed differently together with specific information from the RNA analysis procedure (Figure 2, page 9). For detailed information about RNA analysis, refer to Appendix A in the *QIAxcel RNA Handbook*, October 2009.

Note: All features previously available in BioCalculator Software can be accessed in DNA mode.

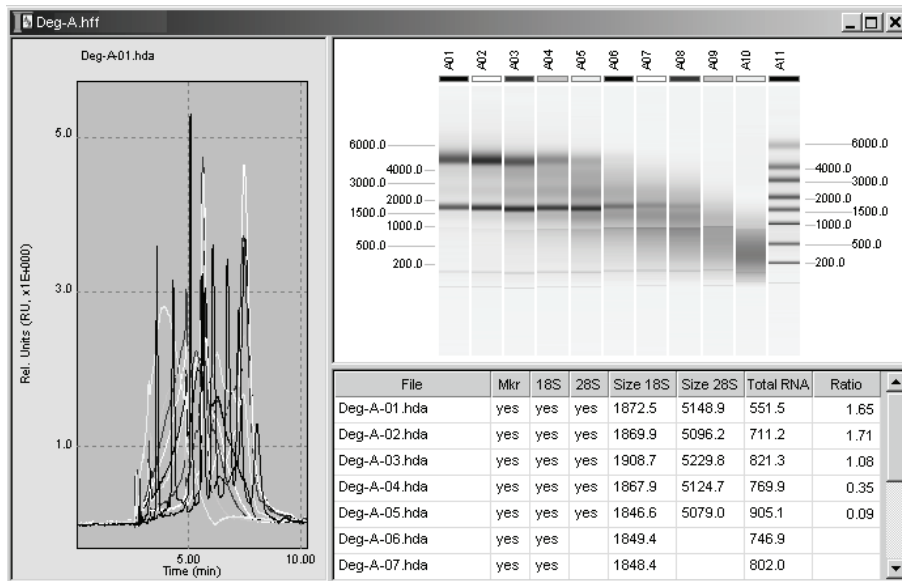
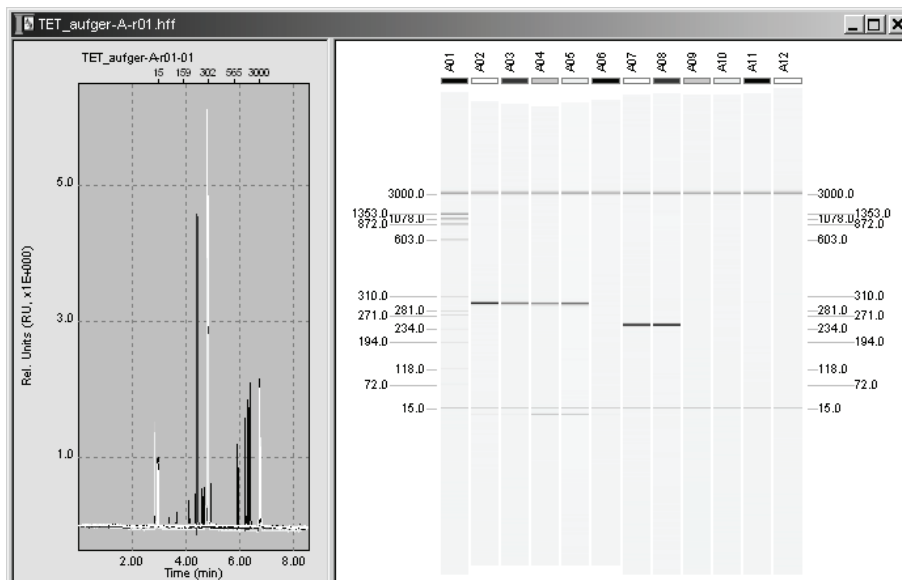
A**B**

Figure 1. BioCalculator Software "Folder view". Results of **A** RNA analysis and **B** DNA analysis are displayed.

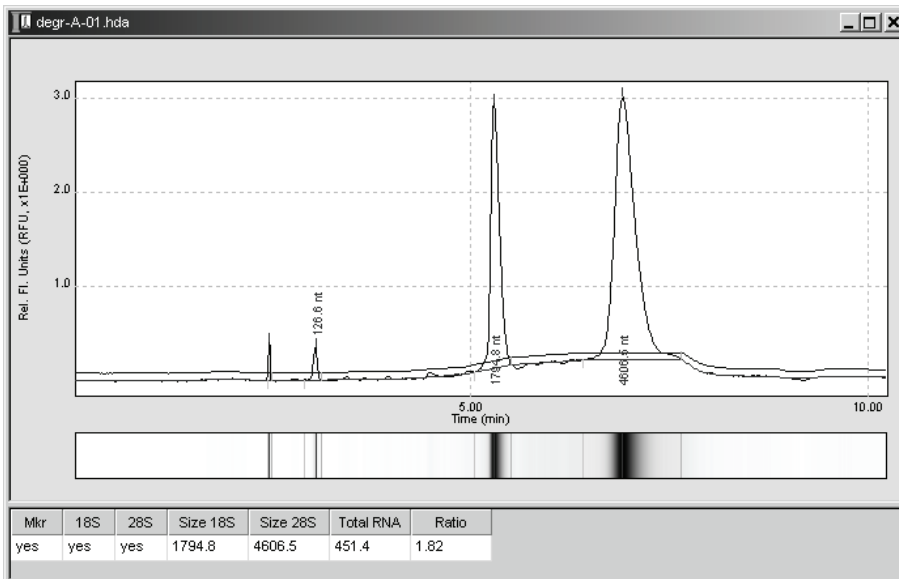
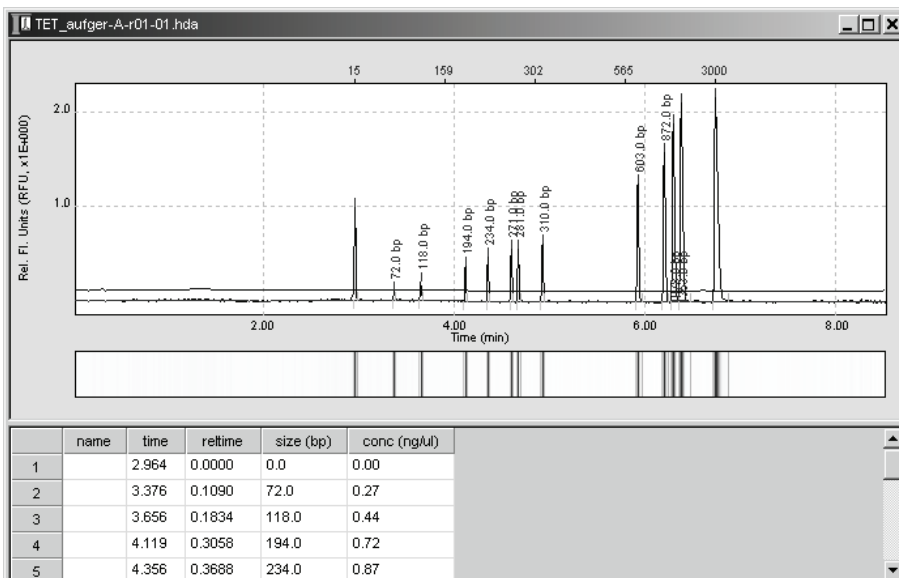
A**B**

Figure 2. Results displayed in electropherogram format. Results of **A** RNA and **B** DNA analysis are displayed.

Fast Analysis mode

BioCalculator Software V3.2 can be used in Fast Analysis mode with the QIAxcel DNA Fast Analysis Kit, enabling fast separation of DNA molecules up to 3 kb in size. For detailed information about the QIAxcel DNA Fast Analysis Kit, refer to the *QIAxcel DNA Fast Analysis Handbook*, October 2009. Fast Analysis mode can be launched by inserting the red software key (cat. no. 9018394) into the USB port of the computer. Additional software installation is not required.

If Fast Analysis mode is active, "BioCalculator (Fast Analysis)" appears in the upper left corner of the BioCalculator Software window (Figure 3). In addition, "BioCalculator Fast Analysis" is displayed in the "About BioCalculator" window. To open the "About BioCalculator" window, select "Help/About BioCalculator..." from the menu bar.

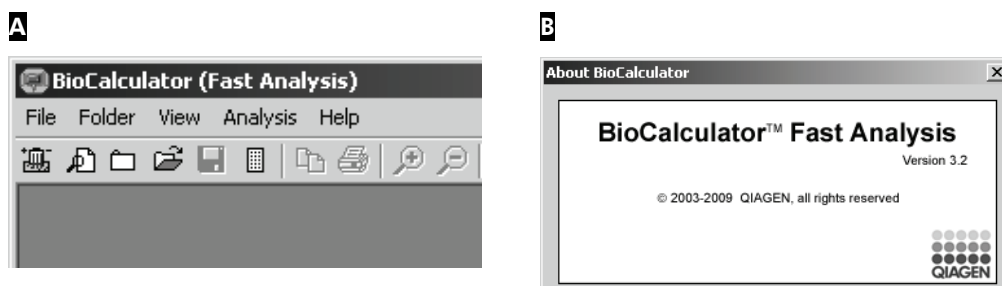


Figure 3. BioCalculator Software Fast Analysis mode. Fast Analysis mode is indicated in **A** the BioCalculator Software window and **B** the "About BioCalculator" window.

QIAGEN handbooks can be requested from QIAGEN Technical Service or your local QIAGEN distributor. Selected handbooks can be downloaded from www.qiagen.com/literature.

For up-to-date licensing information and product-specific disclaimers, see the respective QIAGEN kit handbook or user manual. QIAGEN kit handbooks and user manuals are available at www.qiagen.com or can be requested from QIAGEN Technical Services or your local distributor.

Trademarks: QIAGEN®, QIAxcel® (QIAGEN Group); InstallShield® (InstallShield Software Corporation).

Oct-09 © 2008–2009 QIAGEN, all rights reserved.

www.qiagen.com

Australia = 1-800-243-800
Austria = 0800/281010
Belgium = 0800-79612
Brazil = 0800-557779
Canada = 800-572-9613
China = 0086-21-3865-3865
Denmark = 80-885945
Finland = 0800-914416
France = 01-60-920-930
Germany = 02103-29-12000
Hong Kong = 800 933 965

Ireland = 1800 555 049
Italy = 800-787980
Japan = 03-6890-7300
Korea (South) = 1544 7145
Luxembourg = 8002 2076
Mexico = 01-800-7742-639
The Netherlands = 0800 0229592

Norway = 800-18859
Singapore = 65-67775366
Spain = 91-630-7050
Sweden = 020-790282
Switzerland = 055-254-22-11
UK = 01293-422-911
USA = 800-426-8157



Sample & Assay Technologies